

**2007 - 2008**

**Georgia Special Needs  
Scholarship Program (GSNS)  
Year End Report**

**Georgia Department of Education**  
**2007 – 2008 Georgia Special Needs Scholarship Program (GSNS)**  
**Year End Report**

## **Executive Summary**

Senate Bill 10 as signed into law on May 18, 2007, created the Georgia Special Needs Scholarship Program which allows parents of eligible special needs students to transfer their children to another public school, public school system, state school, or approved participating private school.

The report contained herein represents the results for Fiscal Year 2008 (the 2007-2008 school year) as required by O.C.G.A. § 20-2-2118, which stipulates that the Governor's Office of Student Achievement, in conjunction with the Georgia Department of Education shall provide the General Assembly not later than December 1 of each year with a report regarding the scholarship program for the previous fiscal year.

## **2007-2008 Program Highlights**

- 2007-2008 school year was the inaugural year for the Georgia Special Needs Scholarship Program.
- 117 private schools participated
  - 8 was the average number of students enrolled in private schools
  - 0-42 was the range of students enrolled in each private school
  - 2 private schools did not enroll any students under the program
- 899 public school students enrolled in private schools through the program though this number decreased to 825 by the end of the school year. Of the 899 students enrolled:
  - 29% Female, 71% Male
  - 40% Black, 55% White, 5% Asian/Hispanic/Native American/Multi-Racial
  - 34% Eligible for Free and Reduced Lunch, 66% Not Eligible for Free and Reduced Lunch
  - 158, or 18% were fifth grade students; the largest grade represented
- \$5,639,748 was the state allocation for the scholarship program
- \$5,417,425 was paid in scholarship payments
- \$222,223 in unused funds reverted to the Quality Basic Education program fund
- \$6,260 was the average annual scholarship for the 899 students.
- \$2,536 - \$15,324 was the range for individual scholarship amounts.

## **2007-08 Georgia Pre/Post Assessment and Information:**

- Students were assessed with over 55 different types of assessment instruments, e.g., 17 schools used the Iowa Tests of Basic Skills; 16 schools used the Stanford Achievement Tests; 8 schools used report card data; 7 schools used the Brigance Inventory of Early development.
- Four students, via parent request, participated in the State assessment system in their resident school.
- The data submitted from many schools was inconclusive or incomplete. Pre and post test assessment data could not be aggregated to determine overall academic progress because a common scale of measurement did not exist.
- GaDOE is providing technical assistance to the private schools for the 2008-2009 school year in an effort to promote the use of a more standardized process for assessing and determining student academic progress. GaDOE is working with technology to create a data portal through which private schools could submit pre and post assessment data for each GSNS student electronically.

**Georgia Department of Education**  
**2007 - 2008 Georgia Special Needs Scholarship Program (GSNS)**  
**Year End Report**

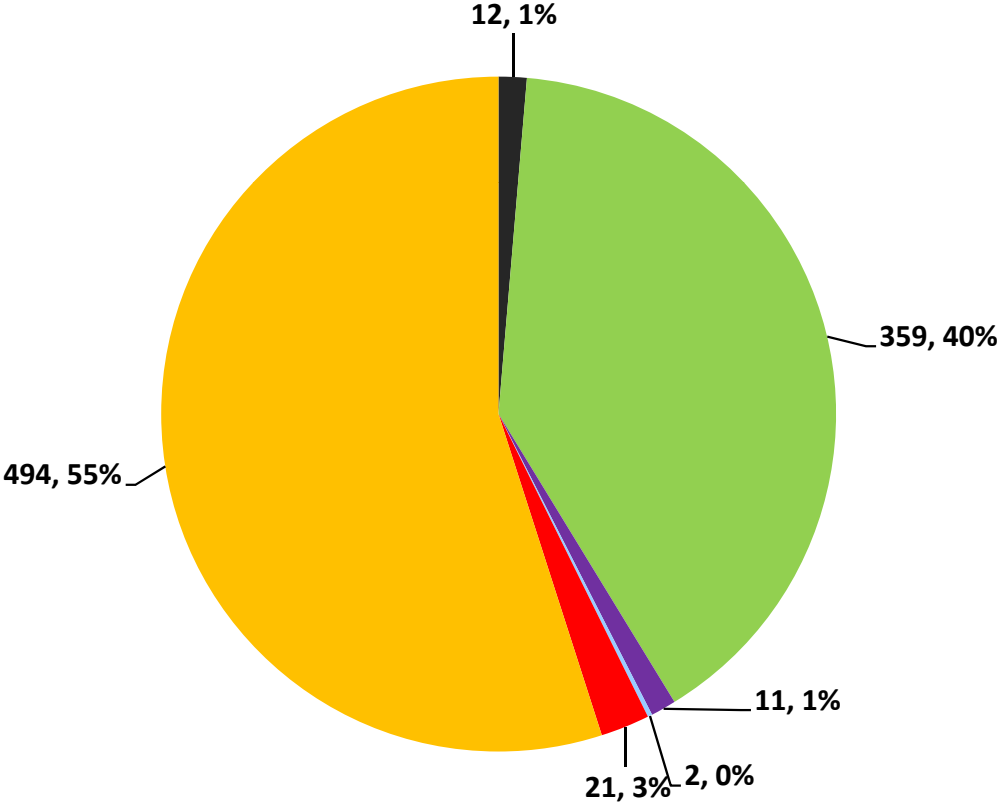
Description	Value
Public School Students Eligible for GSNS Scholarship Statewide	<b>199,509</b>
Total number of Private Schools Participating in GSNS for 2007-2008	<b>117</b>
Total number of Private Schools with enrolled Scholarship Students	<b>115</b>
Number of Private Schools with 10 or More Students	<b>33</b>
Number of Private Schools with Less than 10 Students	<b>82</b>
Total number of Students Receiving Scholarships	<b>899</b>
Median number of Scholarship Students Per School	<b>4.5</b>
Average number of Scholarship Students Per School	<b>8.7</b>
Range of Student Enrollment for the 117 Participating Private Schools	<b>0-42</b>
Georgia Public School Systems Impacted by Scholarship Student Withdrawals	<b>62 of 184</b>
Range of Special Need Scholarship Withdrawals in Georgia Public School Systems	<b>1-122</b>
Number of Students Withdrawing Prior to the End of Year	<b>73</b>
Financial Information	Value
Statewide Annual Allocation Amount for Scholarship Recipients for 2007-2008	<b>\$5,639,648</b>
Total Scholarship Payments Statewide for FY08	<b>\$5,417,425</b>
Difference in Allocation and Total Payments	<b>\$222,223</b>
Range of Annual Scholarship Amounts for the 899 Scholarship Recipients	<b>\$2,536 to 15,324</b>
Median Scholarship Payment for the 899 students	<b>\$6,088</b>
Average Annual Scholarship Amount for the 899	<b>\$6,260</b>

**Georgia Department of Education  
 2007 - 2008 Georgia Special Needs Scholarship Program (GSNS)  
 Year End Report**

<b>Race/Ethnicity</b>	<b>Count</b>
Asian	12
Black	359
Hispanic	11
Native-American	2
Multi-racial	21
White	494
<b>Total</b>	<b>899</b>

**GSNS Students by Race & Ethnicity**

Asian  
  Black  
  Hispanic  
  Native-American  
  Multi-racial  
  White

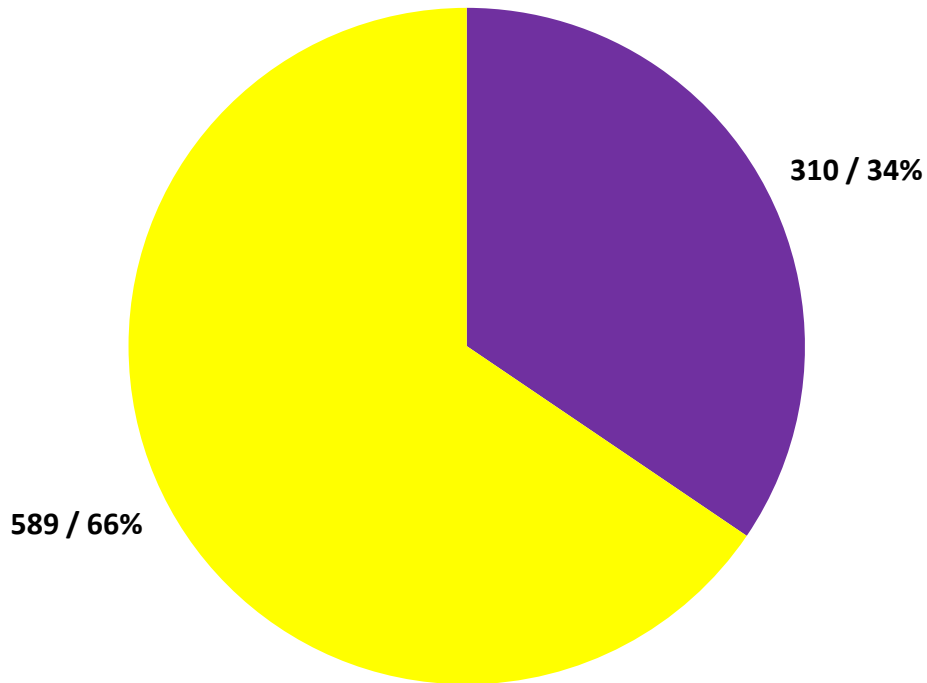


**Georgia Department of Education  
2007 - 2008 Georgia Special Needs Scholarship Program (GSNS)  
Year End Report**

<b>Eligibility</b>	<b>Count</b>
Eligible	310
Not Eligible	589
<b>Total</b>	<b>899</b>

**Free & Reduced Lunch Eligibility**

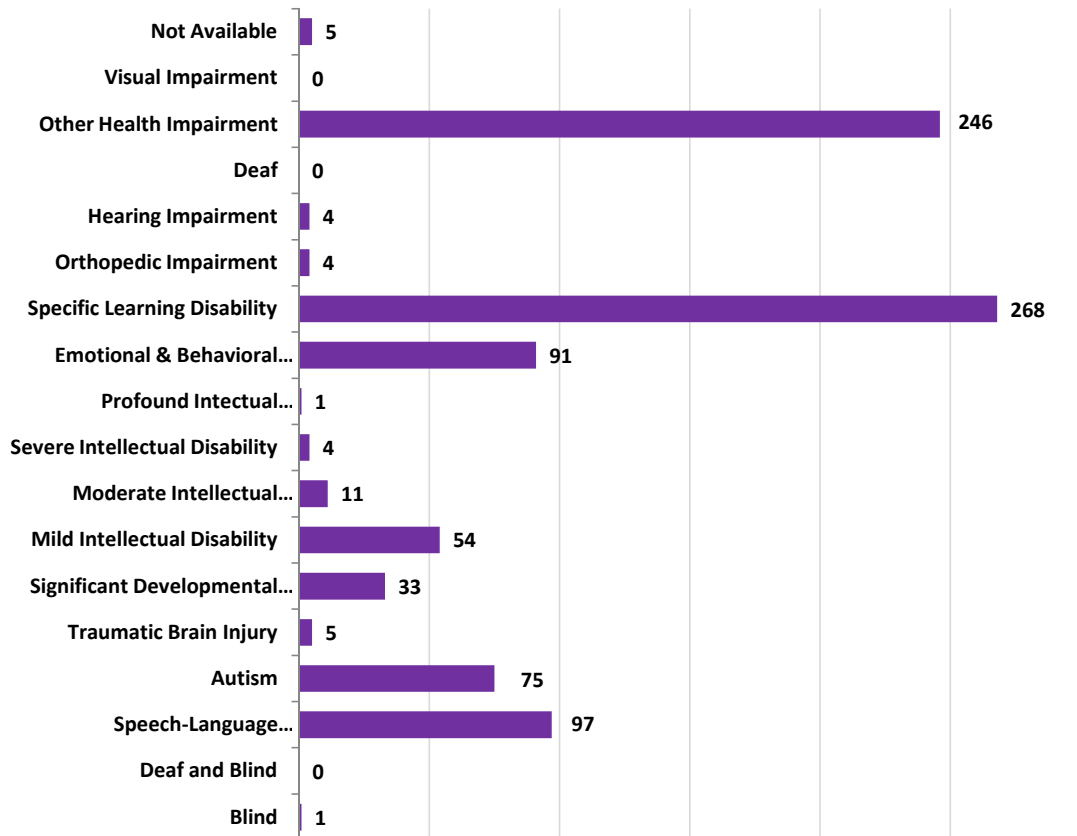
■ Eligible    ■ Not Eligible



**Georgia Department of Education  
2007 - 2008 Georgia Special Needs Scholarship Program (GSNS)  
Year End Report**

<b>Program code</b>	<b>Category</b>	<b>Number</b>
1	Blind	1
2	Deaf and Blind	0
3	Speech-Language Impairment	97
6	Autism	75
7	Traumatic Brain Injury	5
8	Significant Developmental Delay	33
P	Mild Intellectual Disability	54
Q	Moderate Intellectual Disability	11
R	Severe Intellectual Disability	4
S	Profound Intectual Disability	1
T	Emotional & Behavioral Disorder	91
U	Specific Learning Disability	268
V	Orthopedic Impairment	4
W	Hearing Impairment	4
X	Deaf	0
Y	Other Health Impairment	246
Z	Visual Impairment	0
U	Not Available	5
	<b>Total</b>	<b>899</b>

### Scholarship Participants by Disability

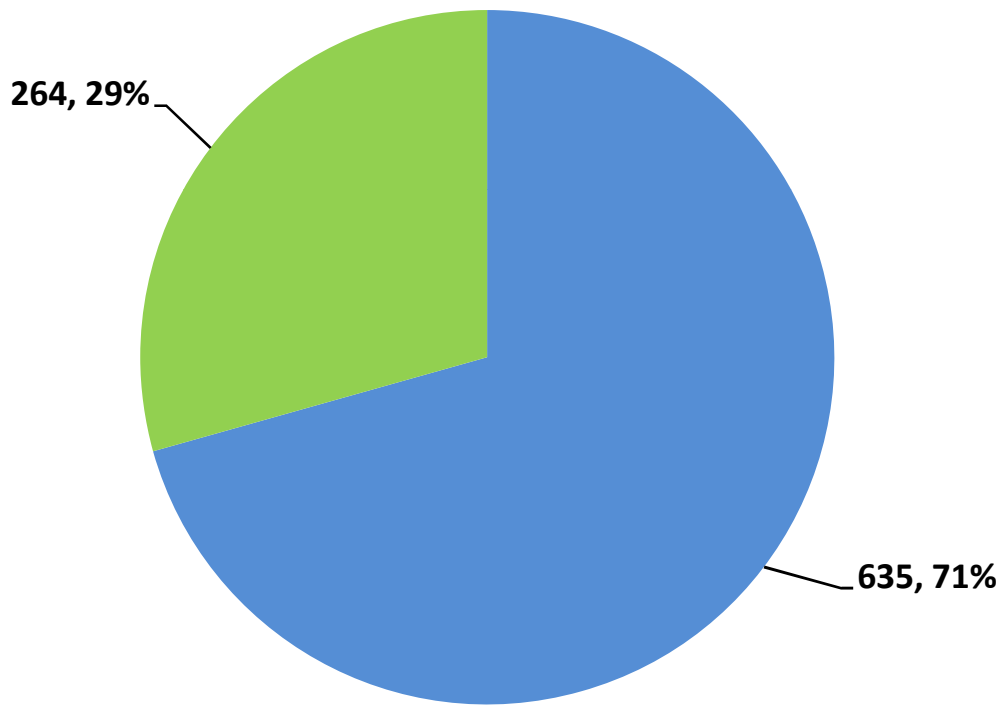


**Georgia Department of Education  
2007 - 2008 Georgia Special Needs Scholarship Program (GSNS)  
Year End Report**

<b>Gender</b>	<b>Count</b>
Male	635
Female	264
<b>Total</b>	<b>899</b>

**GSNS Students by Gender**

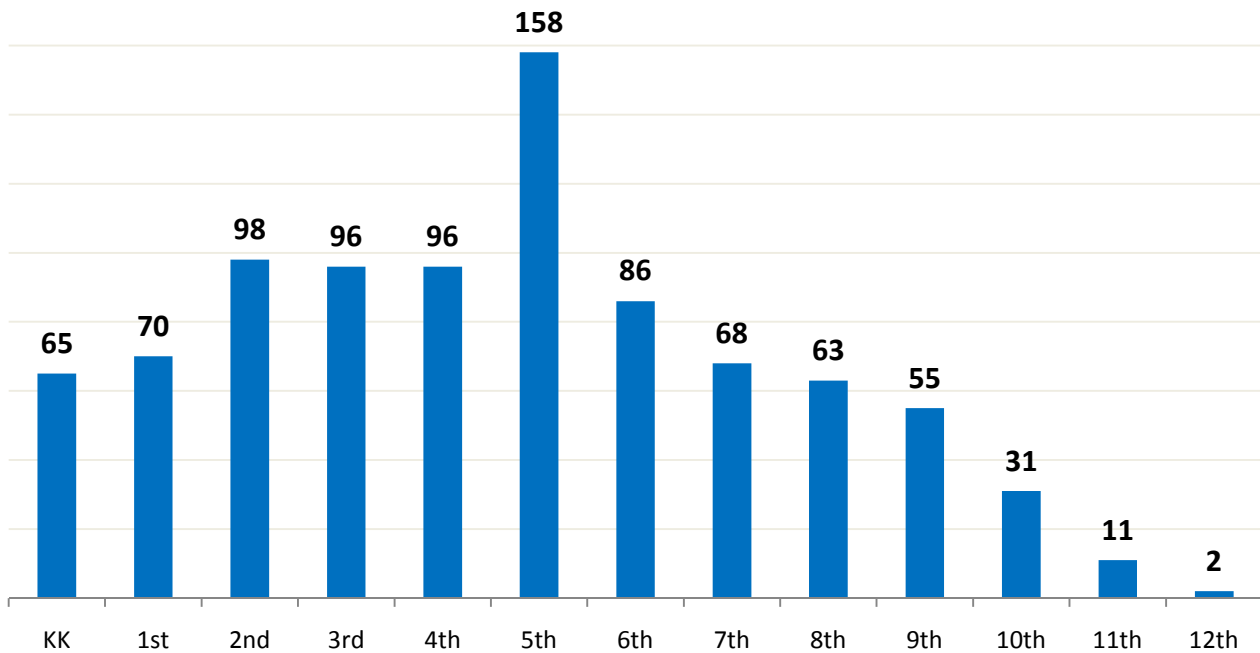
■ Male ■ Female



**Georgia Department of Education  
2007 - 2008 Georgia Special Needs Scholarship Program (GSNS)  
Year End Report**

<b>Grade in 2006-2007</b>	<b>Count</b>
KK	65
1st	70
2nd	98
3rd	96
4th	96
5th	158
6th	86
7th	68
8th	63
9th	55
10th	31
11th	11
12th	2
<b>Total</b>	<b>899</b>

**GSNS Students by Grade (2006-2007)**





**Georgia Department of Education**  
**2007 - 2008 Georgia Special Needs Scholarship Program (GSNS)**  
**Year End Report**

Private School Name	Number of Students Enrolled
ADVANCE Academy	*
Advance Learning Center	*
Amit, Inc.	*
Anointed Word Christian Schools International	*
Atlanta Speech School	*
Aurora Strategies	*
Ava White Academy	*
Bible Baptist Christian School	*
Blessed Sacrament School	*
Branch Christian Community School	21
Brandon Hall	*
Brookwood Christian Language School	13
Brunswick Chrisitan Academy	*
Central Fellowship Christian Academy	*
Chatham Academy at Royce	19
Christian Heritage School	*
Chrysalis Experiential Academy, Inc.	*
Clara Mohammed Elementary and W. Deen Mohammed High School	10
Community Christian Academy (formally Cornerstone Christian Academy)	*
Community Christian School	*
Cornerstone Community Services Learning Academy	*
Cornerstone Preparatory Academy	*
Cornerstone Schools	10
Covenant Christian Academy	*
Cumberland Academy at Sandy Springs	*
Cumberland Academy dba Gables Academy	*
Dawson Street Christian School	12
Decatur Adventist Junior Academy	*
Dominion Christian High School	*
Eagle's Landing Christian Academy	*
Eaton Academy, Inc.	*
Emory Christian School	*
Faith Christian Academy	15
Fayette Christian School	13
Focus Learning & Enrichment Academy	*
Footprints Christian Academy	14
Frederick J.Furtah Preparatory School	42
Fullington Academy	*
Heart of Hope Academy for Children with Special Needs	*
Holy Spirit Preparatory School	*
Hope Christian School of Augusta	19
Hope Schools of Excellence	*
Hopewell Christiam Academy	24
Horizon Christian Academy	*
Horizons School	*

**Georgia Department of Education**  
**2007 - 2008 Georgia Special Needs Scholarship Program (GSNS)**  
**Year End Report**

Private School Name	Number of Students Enrolled
Jacob's Ladder	*
John Hancock Academy	*
Kaleidoscope Applied Behavior Analysis, Inc.	*
Katherine and Jacob Greenfield Hebrew Academy of Atlanta	*
Kingfisher Academy	*
LaGrange Academy	*
Lakeside Preparatory School	13
Lighthouse Christian Academy	*
Lyon Academy Inc. DBA Solid Rock Academy	30
McGinnis Woods Country Day School	*
Memorial Day School	*
Mill Springs Academy	29
Miller's Preparatory Academy for Boys	29
Montessori Community School, Inc. d/b/a Counterpane	*
Mount de Sales Academy	*
Mount Paran Christian School	*
Oasis Learning Center	*
Ombudsman Educational Services at College Living Prep	*
Our Lady of Mercy Catholic High School	*
Paideia School	*
Pathways Academy	*
Peachtree Academy Private School	*
Perimeter Christian School (PCS)	*
Porter Academy	15
Rock Solid Foundations Christian Academy	25
Saint Catherine of Siena Catholic School	*
Saint Francis Day School	28
Sherwood Christian Academy	*
Sophia Academy	14
Special Needs Schools of Gwinnett, Inc.	14
St. Joseph Catholic School	*
St. Paul Academy	18
St. Peter Claver Regional Catholic School	*
St. Teresa's School	*
Stepping Stones Educational Therapy Center, Inc.	10
The Bedford School, Inc.	42
The Campus	*
The Community School	*
The Cottage School	37
The Friends School of Atlanta	*
The Hirsch Academy	*
The Howard School	19
The Joseph Sams School	12

**Georgia Department of Education  
2007 - 2008 Georgia Special Needs Scholarship Program (GSNS)  
Year End Report**

Private School Name	Number of Students Enrolled
The Lighthouse	12
The Lionheart School	*
The Owens Academy For Exceptional Learners	13
The Ron Clark Academy	*
The Schenck School	22
The Swift School	33
Torah Day School of Atlanta	*
Trinity Chapel Academy	*
Vineyard Harvester Christian Academy	*
Waverly Hall Christian Academy	*
Westminster Schools of Augusta	*
Woodfield Academy	25
Woodlee's Christian Academy	11
Woodward Academy	*
Yeshiva Atlanta High School	*
Total	899

\*The Georgia Department of Education does not report student information below 10 students to protect individual students from being identified in compliance with federal law -- the Family Education Privacy Act (FERPA).

**Georgia Department of Education  
2007 - 2008 Georgia Special Needs Scholarship Program (GSNS)  
Year End Report**

The table below lists the Local School District of origin for students participating in the Georgia Special Needs Scholarship Program.

<b>System of Origin</b>	<b>Count of students</b>
Atlanta Public Schools	39
Baldwin County Schools	3
Banks County Schools	1
Bartow County Schools	3
Bibb County Schools	15
Bryan County Schools	3
Butts County Schools	1
Camden County Schools	5
Candler County Schools	2
Carroll County Schools	10
Carrollton City Schools	2
Chatham County Schools	36
Cherokee County Schools	31
Clarke County Schools	1
Clayton County Schools	57
Cobb County Schools	98
Coffee County Schools	2
Columbia County Schools	6
Commerce City Schools	1
Cook County Schools	1
Coweta County Schools	12
Crisp County Schools	1
Decatur City County	3
DeKalb County Schools	111
Dougherty County Schools	1
Douglas County Schools	4
Effingham County Schools	3
Fayette County Schools	46
Floyd County Schools	1
Forsyth County Schools	34
Fulton County Schools	122
Gwinnett County Schools	88

**Georgia Department of Education  
2007 - 2008 Georgia Special Needs Scholarship Program (GSNS)  
Year End Report**

The table below lists the Local School District of origin for students participating in the Georgia Special Needs Scholarship Program.

<b>System of Origin</b>	<b>Count of students</b>
Habersham County Schools	3
Hall County Schools	6
Harris County Schools	3
Henry County Schools	33
Houston County Schools	5
Jefferson City Schools	1
Jones County Schools	3
Lamar County Schools	3
Lee County Schools	2
Liberty County Schools	1
Marietta City Schools	1
Marion County Schools	2
Meriwether County Schools	2
Monroe County Schools	2
Muscogee County Schools	1
Newton County Schools	12
Paulding County Schools	14
Peach County Schools	1
Polk County Schools	3
Richmond County Schools	16
Rockdale County Schools	6
Social Circle City Schools	1
Spalding County Schools	14
Thomaston-Upson County Schools	1
Troup County Schools	11
Walker County Schools	1
Walton County Schools	4
White County Schools	1
Whitfield County Schools	2
Wilkinson County Schools	1
<b>Total</b>	<b>899</b>