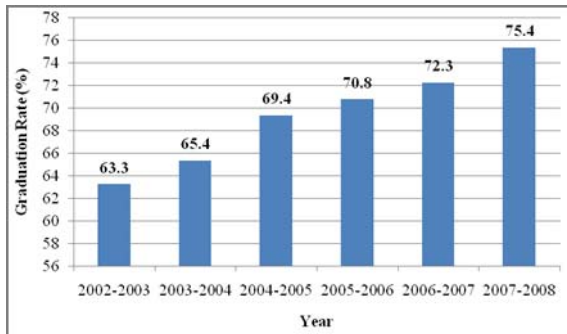


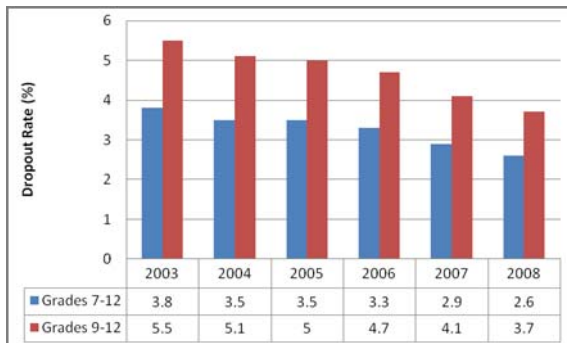
## Successes of the Initiative

- Today, more than **800** graduation coaches serve Georgia middle and high schools, offering intervention services to support the personal and academic needs of nearly **100,000** at-risk Georgia students.
- Due in great part to the work of Georgia's graduation coaches, the state's graduation rate has reached **75.4%** – a record for the state.

## Georgia's Graduation Rate



## Georgia's Dropout Rate



## Parent Resources

**Graduation Coaches, School Counselors, and School Social Workers**  
 Contact these support personnel for assistance in creating a successful school experience for your child through graduation and beyond.

- **Georgia Appleseed Center**  
[www.gaappleseed.org](http://www.gaappleseed.org)
- **Georgia PIRC – Parental Information and Resource Center**  
[www.georgiapirc.net](http://www.georgiapirc.net)
- **National Dropout Prevention Center/ Network**  
[www.dropoutprevention.org/effstrat/family\\_engagement/overview.htm](http://www.dropoutprevention.org/effstrat/family_engagement/overview.htm)
- **National Dropout Prevention Network for Students with Disabilities**  
[www.ndpc-sd.org/resources/for\\_parents.php](http://www.ndpc-sd.org/resources/for_parents.php)
- **Parents Teachers Association**  
[www.pta.org](http://www.pta.org)
- **Georgia Family Connection Partnership**  
<http://www.gafcp.org/>
- **Georgia Department of Education Title I Programs Parent Services Unit**  
[http://www.gadoe.org/tss\\_title\\_parent.aspx](http://www.gadoe.org/tss_title_parent.aspx)

### For More Information

Georgia Department of Education  
 Division of School and Leader Quality  
[http://www.gadoe.org/tss\\_school.aspx](http://www.gadoe.org/tss_school.aspx)

(404) 463-0976

lmartin@doe.k12.ga.us

February 25, 2009

All Rights Reserved



Kathy Cox, State Superintendent of Schools

# What is a Graduation Coach?

## Understanding Georgia's Graduation Coach Initiative



## Why Do Students Drop Out of School?

### Lack of Rigor/High Expectations

- 69% of dropouts said they were not motivated or inspired to work hard.
- 80% of dropouts said they were required one hour or less of homework each day in high school.
- 66% of dropouts reported they would have worked harder if more was expected of them.

### Lack of Relevance

- 81% of dropouts said there should be more opportunities for real-world learning to give students an opportunity to see connections between school and getting a good job.

### Lack of Relationships/Adult Support

- 68% of dropouts reported that their parents only became involved in their education when they became aware that their child was on the edge of dropping out of school.
- Less than half of dropouts interviewed stated that their school contacted their parents or them when they were absent or dropped out of school.

### Lack of Encouragement

- 70% of dropouts were confident that they could have graduated if they had tried, including those with low GPAs.



Source: Bridgeland, J.M., Dilulio, J.H., & Morison, K.B. (2006). *The silent epidemic: Perspectives of high school dropouts*. Washington, DC: Bill & Melinda Gates Foundation.

## Who is At-Risk?

### At-risk students are often those who:

- are credit deficient.
- have failed one or more state assessments.
- display poor/irregular attendance.
- display frequent discipline/behavior challenges.
- are transient.
- struggle in reading and mathematics.
- are disengaged from school.
- have a history of school failure.



## Intervention Strategies that Promote Student Excellence

- Academic remediation
- Credit recovery
- Teachers-As-Advisors
- Faculty Friend Program
- Extracurricular involvement
- Peer tutoring
- Extra help sessions
- Attendance monitoring
- Significant adult mentor

## Graduation Coach Mission

**To ensure the successful transition of all students from elementary to middle school, middle to high school, and high school to post-secondary education or work.**



## Role of the Graduation Coach

**To identify and provide early intervention services to students at risk of dropping out or otherwise not graduating by:**

- analyzing data to identify students at-risk of dropping out.
- implementing schoolwide support interventions.
- motivating students to focus on a graduation plan.
- negotiating extra help services.
- offering academic advisement.
- providing direct student support and case management.
- developing effective transition programs.
- connecting parents and students with appropriate school and community resources.
- encouraging parent/community involvement.

