

Charter Petition Webinar Series

Part III

Operations

May 3, 2011

Charter Schools Division

Greg Wickersham, Education Program Specialist

Morgan Felts, Petition Review Specialist

Terence Washington, Fiscal Analyst



Dr. John D. Barge, State School Superintendent
"Making Education Work for All Georgians"
www.gadoe.org

Agenda

Part I: April 19, 2011

Overview: Petition and Petition Process

Why Charter?: Demonstrating the Need for a Charter

Accountability and SMART Goals

Part II: April 26, 2011

Governance

Legal Requirements

Part III: May 3, 2011

Operations: Budget, Financial Management, and Facilities

Poll: Who's here?

1. What type of school are you?
 - A. New start-up charter school
 - B. Conversion of an existing traditional public school
 - C. Renewal of an existing charter

2. We are applying to:
 - A. Local board of education
 - B. Georgia Charter Schools Commission
 - C. Don't know

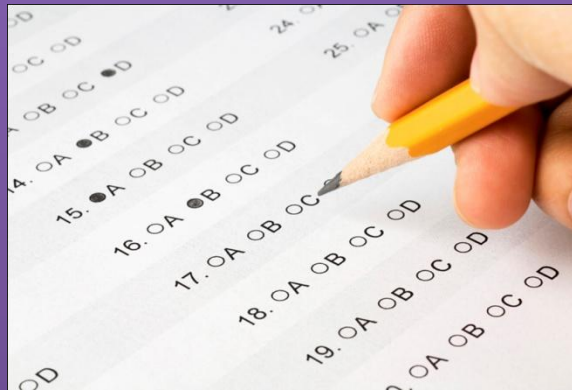
3. I am a
 - A. Teacher
 - B. Administrator
 - C. Parent
 - D. Founding board member
 - E. Other

Financial Operations



Petition Sections: Budget, Financial Management,
Facility

Pre-Quiz



Demo



Walking

through

the

budget

template...

Sample System Allotment Sheet

OFFICIAL

Georgia State Department Of Education

1/20/2011

Earnings Sheet for FY 2011

School System: 648 - Douglas County

FY2011 Amendment #3(Comm. Charter)

THE BASIC UNIT COST IS DEFINED TO BE THE AMOUNT OF \$2,769.20

Earnings (\$)							Earned Positions Grades K-12			
DIRECT INSTRUCTIONAL COST	FTE	SALARY	OPERATING	QBE EARNINGS	LESS LOCAL 5 MILLS	STATE FUNDS	Teacher	Subj. Spec	Couns.	Tech. Spec
Kindergarten Pgm	1,515	8,019,593	95,084	8,114,677	1,300,769	6,813,908	101.00		3.28	1.38
Kindergarten Early Intr Pgm	210	1,437,868	13,180	1,451,048	232,600	1,218,448	19.09		0.45	0.19
Primary Grade(1-3) Pgm	4,829	20,047,587	340,483	20,388,070	3,268,172	17,119,898	284.06	14.00	10.45	4.39
Primary Grd Early Intrv(1-3) Pgm	492	3,055,264	34,703	3,089,967	495,316	2,594,651	44.73	1.43	1.06	0.45
Upper Elementary Grd(4-5) Pgm	2,852	9,034,841	156,928	9,191,769	1,473,425	7,718,344	124.00	8.27	6.17	2.59
UppElem Grd Early Intrv(4-5)	536	3,327,372	29,496	3,356,868	538,100	2,818,768	48.73	1.55	1.16	0.49
Middle Grade(6-8) Pgm	111	348,738	6,127	354,865	56,884	297,981	4.83	0.32	0.18	0.10
Middle School(6-8) Pgm	4,707	16,710,152	259,003	16,969,155	2,720,126	14,249,029	235.35	13.64	7.54	4.28
High School Gen Educ(9-12)	5,471	16,433,564	537,272	16,970,836	2,720,396	14,250,440	237.87		13.68	4.97
Vocational Lab(9-12) Pgm	1,409	4,821,432	440,747	5,262,179	843,518	4,418,661	70.45		3.52	1.28
Students with Disab Cat I	161	1,299,019	37,605	1,336,624	214,259	1,122,365	20.13			0.15
Students with Disab Cat II	107	1,061,118	12,408	1,073,526	172,084	901,442	16.46			0.10
Students with Disab Cat III	753	9,694,623	142,177	9,836,800	1,576,822	8,259,978	150.60			0.68
Students with Disab Cat IV	142	3,041,507	57,799	3,099,306	496,813	2,602,493	47.33			0.13
Students with Disab Cat V	123	989,728	49,929	1,039,657	166,655	873,002	15.38			0.11
Gifted Student Category VI	963	5,198,577	82,347	5,280,924	846,523	4,434,401	80.25			0.88
Remedial Education Pgm	186	804,708	7,814	812,522	130,246	682,276	12.40			0.17
Alternate Education Pgm	294	1,460,868	16,178	1,477,046	236,768	1,240,278	19.60		2.94	0.27
Eng.Spkr.s of Other Lang.(ESOL)	145	1,335,852	6,097	1,341,949	215,112	1,126,837	20.71			0.13
Spec Ed. Itinearant				0	0	0				
Spec Ed. Supplemental Speech				12,131	1,945	10,186				
TOTAL DIRECT INSTRUC.	25,006	108,122,411	2,325,377	110,459,919	17,706,533	92,753,386	1,552.97	39.21	50.43	22.74
INDIRECT COST										
Central Admin		2,584,145	384,834	2,968,979	475,922	2,493,057				
School Admin		5,955,068	175,331	6,130,399	982,692	5,147,707				
Facility M & O			7,451,436	7,451,436	1,194,452	6,256,984				
Sub Total (INDIRECT COST)		8,539,213	8,011,601	16,550,814	2,653,066	13,897,748				
MEDIA CENTER PGM.		2,721,035	349,597	3,070,632	492,217	2,578,415				
20 DAYS ADDITIONAL INSTRUCTION		958,954		958,954	153,719	805,235				
STAFF & PROFESSIONAL DEV				594,915	95,364	499,551				
MIDTERM HOLD HARMLESS										
Amended Formula Adjustment						(16,328,171)				
Charter System Adjustment										
QBE FORMULA EARNINGS	120,341,613		10,686,575	131,635,234	21,100,899	94,206,164	1,552.97	39.21	50.43	22.74
CATEGORICAL GRANTS										
Pupil Transportation Pgm (Includes 111 Drivers and bus replacement funds of 0)				1,630,529		1,630,529				
Sparsity - Regular				0		0				
Sparsity - Alternative Program				0		0				
Sub Total (SPARSITY)				0		0				
Migrant Education				0		0				
TOTAL EARNINGS FOR QUALITY BASIC EDUCATION				133,265,763		95,836,693				
Education Equalization Funding Grant				7,500,778		7,500,778				
Nursing Services				368,388		368,388				
TOTAL STATE FUNDING ON THIS ALLOTMENT SHEET				141,134,929		103,705,859				
Charter Commission Admin - State						0				
Charter Commission Local Revenue						0				
Charter Commission Admin - Local						0				
ARRA				1,916,720		1,916,720				
TOTAL FUNDING ON THIS ALLOTMENT SHEET				143,051,649		105,622,579				
							NOTES			
							Expenditure Controls relating to direct instructional costs%2c media center costs%2cstaff%2fprofessional development costs and 20 Days on Additional Instruction have been waived and shall not apply to nor be enforceable against a local system in FY 2011.			

NOTES

Basic Internal Controls

Performance
Reviews

Information
Processing
Controls

Physical
Controls

Segregation of
Duties

Authorization
and Document
Based Controls

Common Budget Mistakes

Overestimating
funding

Underestimating
expenses

Including
competitive grants
as a source of
revenue

Budget Deficits

Negative ending
cash amounts

5 Yr Budget
numbers do not
match Cash Flow
Projection numbers

Fuzzy Assumptions

CFO Requirement

At the time you submit your petition you should have a highly qualified CFO

Name the person OR provide details of job qualification and rigorous hiring process

List how their qualifications match state requirements

Useful Links

School System Revenues/Expenditures

- http://app3.doe.k12.ga.us/ows-bin/owa/fin_pack_revenue.entry_form

QBE Reports

- http://app3.doe.k12.ga.us/ows-bin/owa/qbe_reports.public_menu?p_fy=2000

Facilities

Make reasonable rent or mortgage estimates when a facility hasn't been secured

- Provide documentation to support your estimate

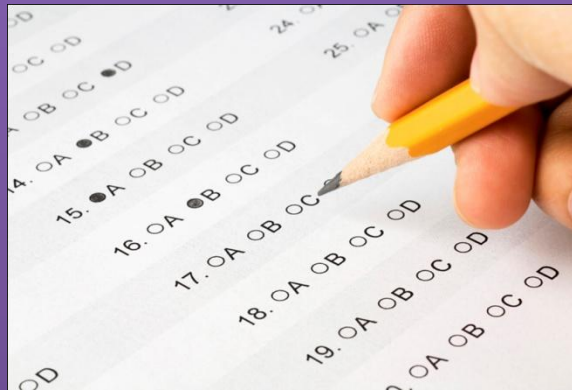
Provide all information requested on the application

- Geographic region
- Facility descriptions
- Permits, Certificate of Occupancy and documents of ownership/lease
- Etc.

Questions



Post-Quiz



Charter Schools Division Staff

Louis Erste

Director

Tel: (404) 651-8734

Email:
lerste@doe.k12.ga.us

Tabitha Press

***Strategic Development
Coordinator***

Tel: (404) 463-6458

Email: tpress@doe.k12.ga.us

Marissa M. Key

***Charter Petition Legal
Specialist and Program
Manager***

Email: mkey@doe.k12.ga.us

Terence Washington

Fiscal Analyst

Tel: (404) 651-0042

Email:
twashington@doe.k12.ga.us

Morgan Felts

Staff Attorney

Tel: (404) 656-0027

Email: mfelts@doe.k12.ga.us

Greg Wickersham

Education Program Specialist

Tel: (404) 463-1196

Email:
gwickersham@doe.k12.ga.us

Michelle Hansberry

Program Associate

Tel: (404) 463-4291

Email:
mhansberry@doe.k12.ga.us

Jackie Clarke-Dodd

Administrative Assistant

Tel: (404) 657-0515

Email:
jclarkedodd@doe.k12.ga.us



Dr. John D. Barge, State School Superintendent
"Making Education Work for All Georgians"
www.gadoe.org

Georgia Charter Schools Commission Staff

Mark Peevy

Director

Phone: 404-656-2672

Email: mark.peevy@gcsc.ga.gov

Laura Ingram Lashley

Petitions Program Manager

Phone: 404-656-2675

Email: laura.lashley@gcsc.ga.gov,

Bonnie Stewart

Accountability Program Manager

Phone: 404-656-2740

Email: bonnie.stewart@gcsc.ga.gov,

Marc Johnson

***Program Manager, Partnership
and Resource Development***

Phone: 404-656-2679

Email: marc.johnson@gcsc.ga.gov,

Samantha Graham

Office Manager

Phone: 404-656-2671

Email:
samantha.graham@gcsc.ga.gov,

Thank you!



Dr. John D. Barge, State School Superintendent
"Making Education Work for All Georgians"
www.gadoe.org