



Dr. John D. Barge, State School Superintendent

PCGENESIS TECHNICAL SYSTEM OPERATIONS GUIDE

10/11/2011

Section B: Assigning PCGenesis Printers
at the Server, V1.1

Revision History

Date	Version	Description	Author
10/11/2011	1.1	Release 11.03.00 – Changed document's cover page.	D. Ochala
02/06/2007	1.0	Changed document's cover page.	C. W. Jones

Table of Contents

OVERVIEW.....1

Overview

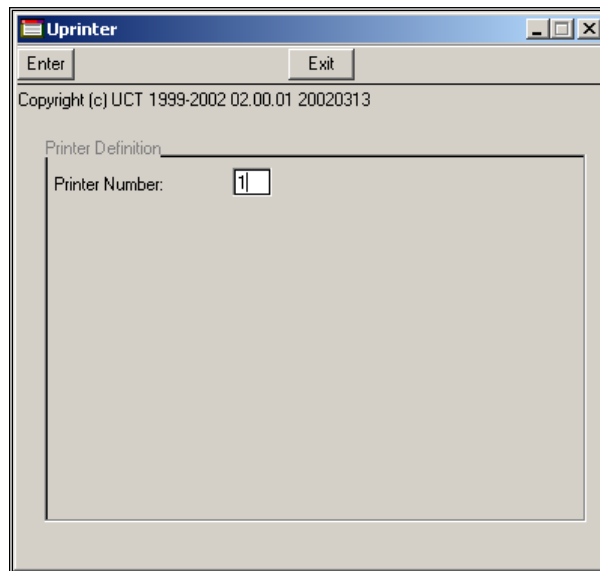
Assigning printers identifies the check, report, and *Backup Logs* printers. PCGenesis shares the report and *Backup Log* printers.

***** ATTENTION *****

Perform this Procedure at the PCGenesis server.

Step	Action
1	Start PCGUPrinter.

The following window displays:



Step	Action
2	Enter 1 in the Printer Number field and press ENTER .

